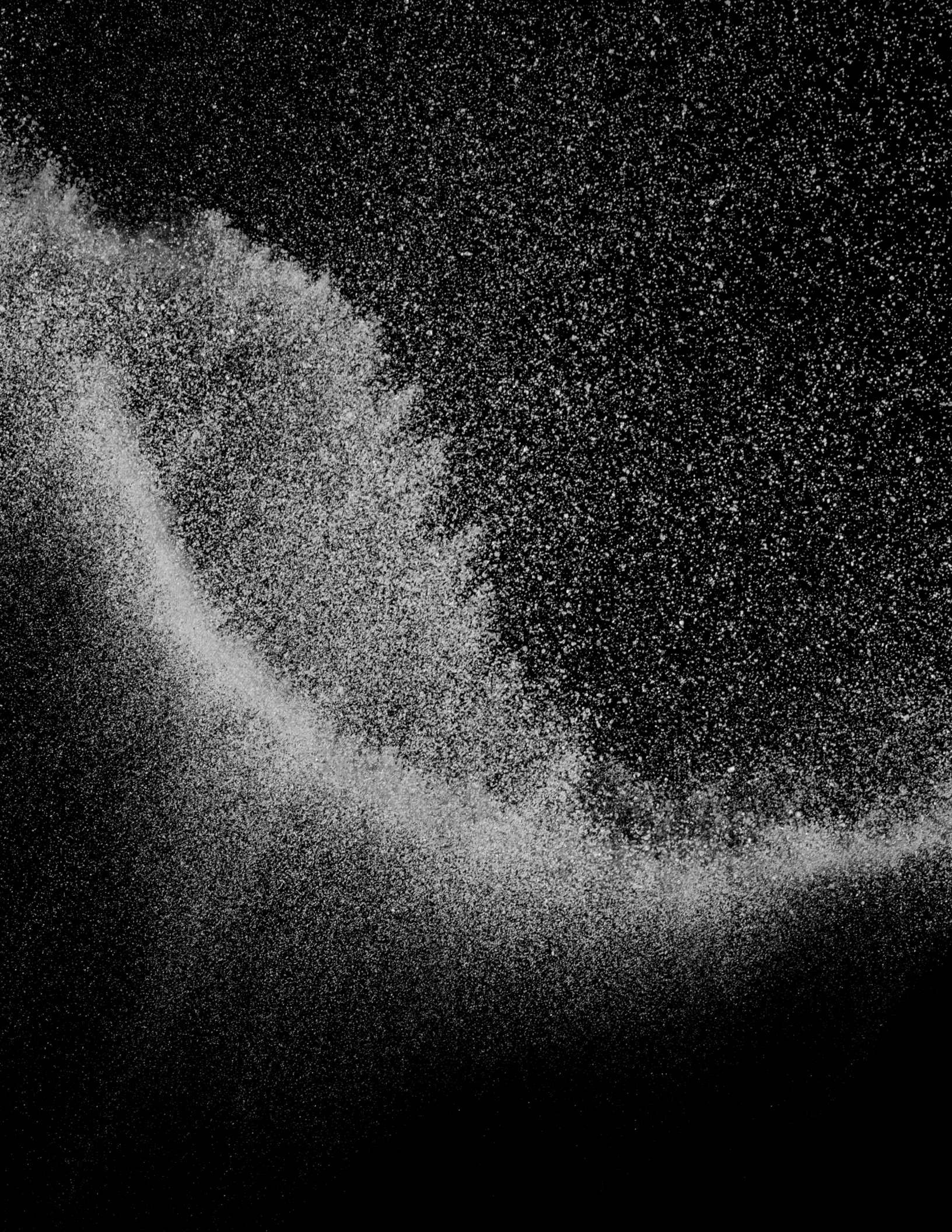


SUPERCRITICAL CO2

*PRESSURE REGULATORS, VALVES,
AND GAS DELIVERY SYSTEMS*



**AMERICAN MADE.
INNOVATIVE.
RELIABLE.
ECONOMICAL.
PREMIER.**

PREMIER REGULATORS, VALVES, & GAS DELIVERY SYSTEMS FOR USE WITH SUPERCRITICAL CO₂

INNOVATIVE DESIGNS FORMULATED FOR SUPERCRITICAL CO₂.

We have been working in conversation with supercritical systems engineers to optimize a new series of regulators and valves for use in supercritical CO₂ applications.

Premier Industries SCF Series regulators and valves are elastomer free, designed to stand up to the aggressive, solvent-like qualities of supercritical fluids like SCCO₂, while providing reliable and precise pressure regulation in the most demanding application conditions.

WE'RE EXPERIENCED AND RESPONSIVE.

We manufacture and test all our equipment to meet rigid industry specifications while keeping in mind the distinctive needs and expectations of our customers.

Our customers know, if they have a question, they can pick up the phone and give us a call. No automated messaging systems here. We have a team of engineers with over 100 years of regulator design experience ready to assist you. We are always pushing for more sophisticated processes, working on leading-edge designs, while striving to remain personable and responsive.

PROPRIETARY SEALS DESIGNED FOR USE WITH SUPERCRITICAL CO₂.

Supercritical processes are tough on seals. That's why we developed a proprietary sealing system that uses elastomer-free polymers, specially formulated for use in dynamic conditions.

Our unique sealing system allows us to fit a variety of Premier Industries regulators and valves for use in supercritical applications. So, whether you are looking for a pressure reducing or a back pressure regulator, a high pressure or a low pressure regulator, our team here at Premier would be happy to work with you to find a Premier SCF Series regulator for your application.

FINDING A PRODUCT TO SUIT YOUR APPLICATION.

Premier SCF regulators are offered in a variety of materials (with varying weights, strengths, degrees of corrosion resistance, etc.), flow capacities, and inlet/outlet pressure ranges. With the flexibility of optional port alignments, port sizes/types, relief and shut off valves, etc. Premier SCF regulators provide maximum versatility and compatibility for your application.

Contact a Premier Industries representative to configure a regulator to suit the demands of your application.



*PROPRIETARY SEALS &
ELASTOMER FREE DESIGNS*

**SUITED FOR THE AGGRESSIVE,
SOLVENT-LIKE QUALITIES OF
SUPERCRITICAL CO₂**



Products for pressure ratings up to
to 15000 PSIG (1034.21 BAR).

Optional laser etched parts.

Elastomer free designs

Proprietary seals suited for
supercritical CO2 applications

A variety of mounting options to
integrate seamlessly into your
desired application: surface
mounting, panel nuts, panel
mounting brackets, flanges etc.

Optional laminar flow clean bench
assembly, testing, and packaging.

Dome and air-loaded regulators
for use with electro-pneumatic
controllers for precision and
automation.

Optional material certifications.

PRODUCTS FOR SUPERCRITICAL CO₂ APPLICATIONS



THIS IS A SMALL SELECTION
FROM OUR PRODUCT LINE.

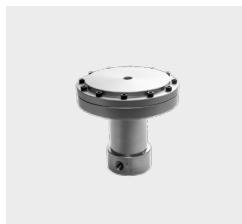
PLEASE CONTACT US WITH
INTEREST OR VISIT OUR
WEBSITE FOR A BROADER
PRODUCT SELECTION.

WWW.PREMIERIND.US

763.786.4020

We answer the phone!

SCF 3000AL SERIES



FEATURES	MAX INLET PRESSURE	FLOW CAPACITY	BODY MATERIAL
<ul style="list-style-type: none"> • Pressure reducing regulator • Piston Sensed • Compatible with electro-pneumatic controllers • P/N: 30 -10219SC 	10000 psig / 689.5 bar	Cv: 0.06 Cv: 0.12	316 Stainless Steel

SCF 3100 SERIES



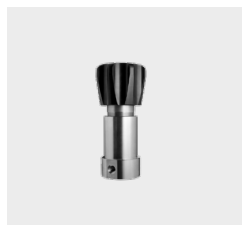
FEATURES	MAX INLET PRESSURE	FLOW CAPACITY	BODY MATERIAL
<ul style="list-style-type: none"> • Back pressure regulator • Piston sensed • Optional heater core holes • P/N: 30 -10066SCMB 	10000 psig / 689.5 bar	Cv: 0.03 Cv: 0.06 Cv: 0.14 Cv: 0.20	316 Stainless Steel

SCF 3100AL SERIES



FEATURES	MAX INLET PRESSURE	FLOW CAPACITY	BODY MATERIAL
<ul style="list-style-type: none"> • Back pressure regulator • Piston sensed • Compatible with electro-pneumatic controllers • P/N: 30 -10205SC 	10000 psig / 689.5 bar	Cv: 0.03 Cv: 0.06 Cv: 0.14 Cv: 0.20	316 Stainless Steel

SCF 3123 SERIES



FEATURES	MAX INLET PRESSURE	FLOW CAPACITY	BODY MATERIAL
<ul style="list-style-type: none"> • Back pressure regulator • Piston Sensed • Low-torque hand knob • P/N: 30 -10223SC 	15000 psig / 1034.2 bar	Cv: 0.06	316 Stainless Steel

SCF 3123AL SERIES



FEATURES	MAX INLET PRESSURE	FLOW CAPACITY	BODY MATERIAL
<ul style="list-style-type: none">• Back pressure regulator• Piston sensed• Compatible with electro-pneumatic controllers• P/N: 30 -10223SCAL	15000 psig / 1034.2 bar	Cv: 0.06	316 Stainless Steel

SCF AO SERIES



FEATURES	MAX INLET PRESSURE	FLOW CAPACITY	BODY MATERIAL
<ul style="list-style-type: none">• Air operated• Normally closed• 100 -150 PSIG (6.89-10.34 BAR) actuation pressure• P/N: 70 - 00316	10000 psig / 689.5 bar	Cv: 0.80	316 Stainless Steel

763.786.4020

sales@premierind.us

WWW.PREMIERIND.US

