

## 2800S SERIES

High Flow, Stainless Diaphragm Sensed  
Pressure Reducing Regulators



Premier 2800S Series single stage, high flow, diaphragm sensed, variable delivery pressure regulators, are designed for inlet pressures up to 3000 PSIG (206.84 bar), and Cv 1.0 or 2.0. Premier 2800S Series regulators feature a stainless steel diaphragm to minimize off-gassing, and a balanced stem for increased outlet pressure stability. Available for use with a broad range of non-corrosive and corrosive media (based on materials of construction).

### FEATURES

- Stainless steel diaphragm minimizes off-gassing
- Balanced stem for increased outlet pressure stability
- Flow capacity (Cv): 1.0, or 2.0
- Optional relief valve
- Optional panel mounting nut
- Non-venting
- Very competitive pricing
- Machined bar stock body eliminates porosity found in castings

**SOME APPLICATIONS WILL REQUIRE A CUSTOM SOLUTION.**  
CONTACT PREMIER INDUSTRIES TO REQUEST A MODIFICATION  
OR A CUSTOM DESIGN.

# 2800S SERIES

High Flow, Stainless Diaphragm Sensed  
Pressure Reducing Regulators

## SPECIFICATIONS

- **MAXIMUM INLET PRESSURE:**
  - 3000 PSIG (206.84 bar)
- **CONTROL PRESSURE RANGES:**
  - 0-10 PSIG (0 - 0.69 bar)
  - 0-25 PSIG (0 - 1.72 bar)
  - 0-50 PSIG (0 - 3.45 bar)
  - 0-100 PSIG (0 - 6.89 bar)
  - 0-150 PSIG (0 - 10.34 bar)
- **FLOW (Cv):** 1.0 or 2.0

## MATERIALS OF CONSTRUCTION

- **BODY:**
  - 316 Stainless Steel
  - SAE 360 Brass
  - SAE 360 Brass/Nickel Plated\*  
*\*Contact factory for pricing*
  - 6061-T6 Aluminum/Clear Anodized
- **BONNET:**
  - SAE 360 Brass/Nickel Plated
  - 6061-T6 Aluminum/Nickel Plated
  - 6061-T6 Aluminum/Clear Anodized
- **DIAPHRAGM:**
  - 316 Stainless Steel
- **MAIN VALVE SEAT:**
  - Vespel®
  - PCTFE
- **VALVE SHAFT SEAL:** Viton-A®
- **DIAPHRAGM SEAL:** PTFE

## PORTING

- **STANDARD INLET:**
  - 1/2-14 FNPT
- **STANDARD OUTLET:**
  - 1/2-14 FNPT
- **OPTIONAL INLETS:**
  - 1/4 FNPT
  - 3/8 FNPT
- **OPTIONAL OUTLETS:**
  - 1/4 FNPT
  - 3/8 FNPT

## OPTIONS

- Gauges
- Relief Valve
- Private Label
- Panel Mounting Nut

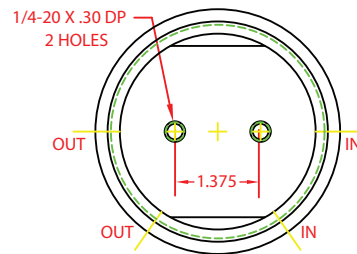
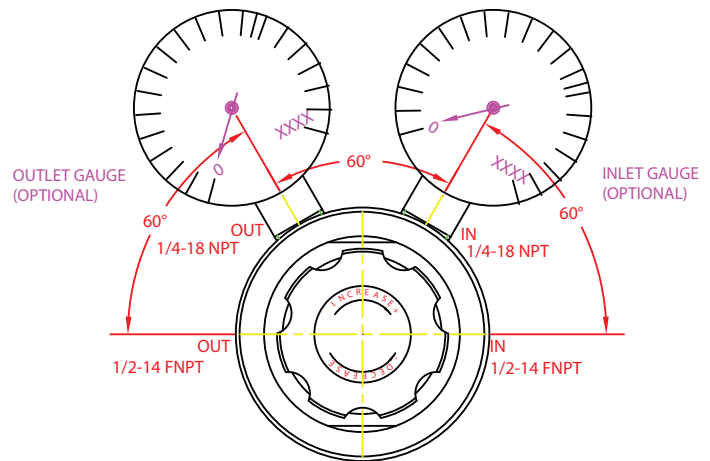
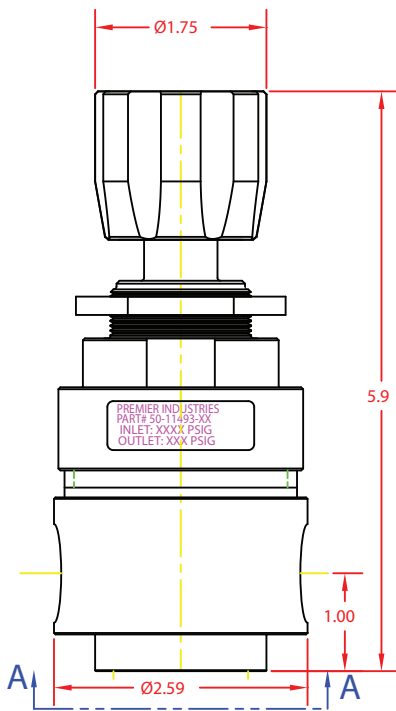
*Vespel® and Viton-A® are registered trademarks of E.I. duPont de Nemours and Company*

*Contact factory for material certifications. Fees may apply.*

# 2800S SERIES

High Flow, Stainless Diaphragm Sensed  
Pressure Reducing Regulators

PART NUMBER: 50-11493


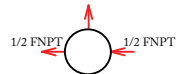
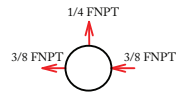
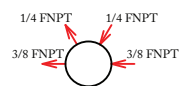


**VIEW A-A**  
MOUNTING HOLES

PART #	-	1	2	3	4	5	6
50-11493	-						

1	BODY MATERIALS & FINISH
2	316 Stainless Steel, Cleaned per spec #515
3	6061-T6 Aluminum, Clear Anodized
5	SAE 360 Brass, Nickel Plated <i>Contact factory for pricing</i>
8	SAE 360 Brass
2	OUTLET PRESSURE <i>(Outlet gauge range if supplied)</i>
0	0-10 psig / 0-0.69 bar <i>(per application)</i>
1	0-25 psig / 0-1.72 bar <i>(0-60 psig gauge)</i>
2	0-50 psig / 0-3.45 bar <i>(0-100 psig gauge)</i>
3	0-100 psig / 0-6.89 bar <i>(0-160 psig gauge)</i>
4	0-150 psig / 0-10.34 bar <i>(0-400 psig gauge)</i>

3	GAUGES <i>(Optional)</i>
Blank	none <i>(standard)</i>
B	2" diameter outlet only, stainless steel wetted gauge
C	2" diameter inlet & outlet, stainless steel wetted gauges
E	2" diameter outlet only, SAE 360 brass wetted gauge
F	2" diameter inlet & outlet, SAE 360 brass wetted gauges
H	2" diameter outlet only, SAE 360 brass wetted/ chrome plated gauge
J	2" diameter inlet & outlet, SAE 360 brass wetted/ chrome plated gauges
4	PANEL MOUNTING NUT <i>(Optional)</i>
5	Mounting nut
8	No nut <i>(standard)</i>

5	PORTING OPTIONS
Blank	<i>Standard porting</i> 
R	
S	
T	
6	MAIN VALVE Cv
Blank	Cv 1.0 main valve <i>(standard)</i>
Z	Cv 2.0 main valve

*Contact factory for material  
certifications. Fees may apply.*