

4600 SERIES

Two Stage, High Pressure, Piston Sensed
Pressure Reducing Regulators



Premier 4600 Series high pressure, two stage regulators offer precise and stable outlet pressures despite variations in supply pressure. These piston sensed regulators are designed for inlet pressures up to 6000 PSIG (*413.69 bar*); and Cv 0.06 or 0.20.

FEATURES

- Cv: 0.06 or 0.20
- Stable set pressures as cylinder pressure is reduced
- Piston sensed
- Max inlet pressure: 6000 psig / 413.69 bar
- Machined bar stock body eliminates porosity found in castings

SOME APPLICATIONS WILL REQUIRE A CUSTOM SOLUTION.
CONTACT PREMIER INDUSTRIES TO REQUEST A MODIFICATION
OR A CUSTOM DESIGN.

4600 SERIES

Two Stage, High Pressure, Piston Sensed
Pressure Reducing Regulators

SPECIFICATIONS

- **MAX INLET PRESSURE:**
 - 6000 psig / 413.69 bar
- **OUTLET PRESSURE RANGES:**
 - 0-100 PSIG (0-6.89 bar)
 - 0-400 PSIG (0-27.58 bar)
 - 5-700 PSIG (0.34-48.26 bar)
 - 5-1000 PSIG (0.34-68.95 bar)
 - 10-1500 PSIG (0.69-103.42 bar)
 - 15-2500 PSIG (1.03-172.37 bar)
- **FLOW (Cv):** 0.06, 0.20

MATERIALS OF CONSTRUCTION

- **BODY:**
 - SAE 360 Brass, Nickel Plated*
**Contact for pricing*
 - 316 Stainless Steel
- **WETTED COMPONENTS:**
 - 316 Stainless Steel
 - 17-4 Stainless Steel
- **VALVE STEM:**
 - 17-4 Stainless Steel
- **1st STAGE VALVE SEAT:**
 - Vespel®
- **2nd STAGE VALVE SEAT:**
 - PCTFE
- **O-RING MATERIAL OPTIONS:**
 - Buna-N
 - Aflas®
 - EPDM
 - Viton-A®
 - Kalrez® (*Contact factory for pricing*)
 - Nitrile, low temp
- **BACK-UP RINGS:**
 - PCTFE
- **SEALS, STATIC:**
 - PTFE

PORTING

- **INLET PORTING:**
 - 1/4" NPT
- **OUTLET PORTING:**
 - 1/4" NPT
- **INTERSTAGE PORTING:**
 - 1/8" NPT

OPTIONS

- Gauges
- Private labeling
- Fluted knob, T-handle, tamper resistant acorn nut

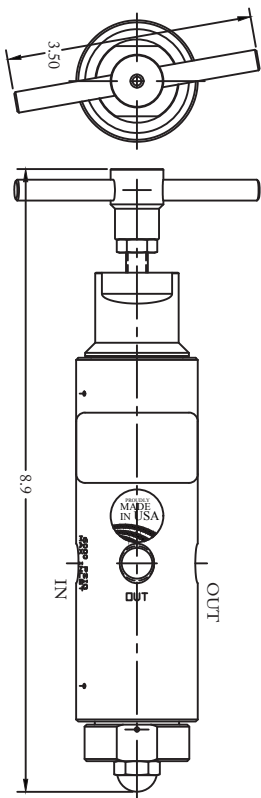
*Vespel®, Kalrez®, and Viton® are registered trademarks of
E.I. duPont de Nemours and Company
Monel® is a registered trademark of Special Metals Corporation.
AFLAS® is a registered trademark of Asahi Glass Co., Ltd.*

4600 SERIES

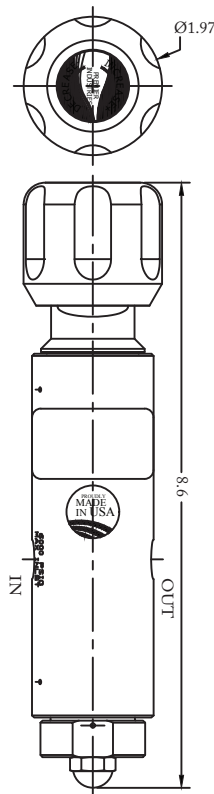
Two Stage, High Pressure, Piston Sensed
Pressure Reducing Regulators

PART NUMBER: 50-13020

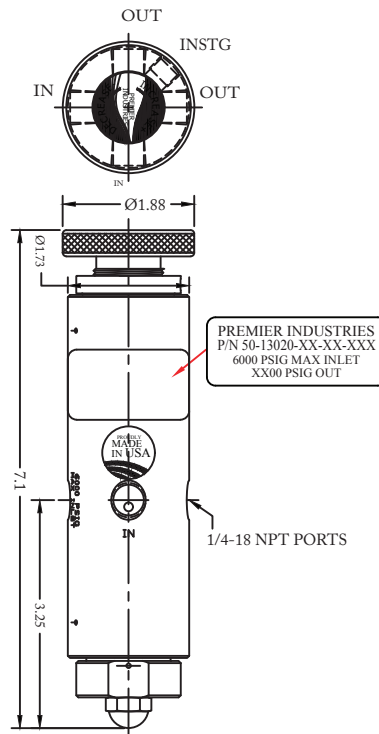
T-HANDLE



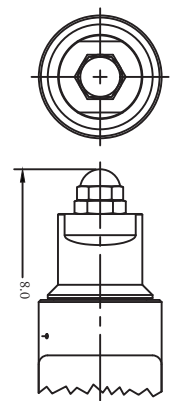
FLUTED HAND KNOB



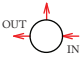
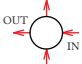

LOW PROFILE HAND KNOB



ACORN NUT



PART #	-	1	2	-	3	4	-	5	6	7
50-13020	-			-			-			

1	BODY MATERIAL
B	SAE 360 Brass, <i>(Contact for pricing)</i> Nickel plated
1	316 Stainless Steel
2	PORT CONFIGURATIONS
D	
B	
A	
3	OUTLET PRESSURE
1	0-100 PSIG (0-6.89 bar)
3	0-400 PSIG (0-27.58 bar)
4	5-700 PSIG (0.34-48.26 bar)
5	5-1000 PSIG (0.34-68.95 bar)
6	10-1500 PSIG (0.69-103.42 bar)
7	15-2500 PSIG (1.03-172.37 bar)

4	MAIN VALVE Cv
0	0.06 Cv MAX
2	0.2 Cv MAX
5 6	O-RING MATERIAL
00	BUNA-N
01	AFLAS®
02	VITON-A®
05	EPDM
11	KALREZ®
12	NITRILE, LO-TEMP
7	HAND KNOB
1	LOW PROFILE
2	FLUTED
3	T-HANDLE
4	ACORN NUT (tamper resistant)

*Vespel®, Kalrez®, and Viton® are registered trademarks of E.I. duPont de Nemours and Company
Monel® is a registered trademark of Special Metals Corporation.*

*Contact factory for material certifications.
Fees may apply.*