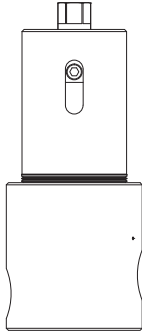


H2 3116 SERIES

Hydrogen, High Pressure, High Flow
Back Pressure Regulators



Premier H2 3116 Series regulators are high pressure, high flow, piston sensed, back pressure regulators rated for inlet pressures up to 6000 psig / 413.7 bar and Cv 1.0, or 2.0. Premier H2 3116 Series regulators are designed for use in Hydrogen applications; they are available with a wide range of inlet and outlet configurations.

FEATURES

- Designed for use with Hydrogen
- High flow capacity (Cv): 1.0, or 2.0
- Optional surface mount
- Machined bar stock body eliminates porosity found in castings

SOME APPLICATIONS WILL REQUIRE A CUSTOM SOLUTION.
CONTACT PREMIER INDUSTRIES TO REQUEST A MODIFICATION
OR A CUSTOM DESIGN.

SPECIFICATIONS

- **MAXIMUM INLET PRESSURE:**
 - 6000 PSIG / 413.7 bar
- **CONTROL PRESSURE RANGES:**
 - 5-500 PSIG (0.34-34.5 bar)
 - 5-800 PSIG (0.34-55.16 bar)
 - 10-1500 PSIG (0.7-103.4 bar)
 - 15-2500 PSIG (1.0-172.4 bar)
 - 25-4000 PSIG (1.7-275.8 bar)
 - 50-6000 PSIG (3.5-413.7 bar)
- **FLOW (Cv):** 1.0, or 2.0
- **OPERATING TEMPERATURE:****
 - -15°F/-26°C to 212°F/100°C (BUNA-N)
 - -4°F/-20°C to 400°F/204°C (Viton®)
 - -65°F/-54°C to 302°F/150°C (EPDM)

*** Lower temperature compounds available*

MATERIALS OF CONSTRUCTION

- **BODY:**
 - 316 Stainless Steel
- **MAIN VALVE STEM:**
 - 316 Stainless Steel
- **MAIN VALVE SEAT OPTIONS:**
 - PCTFE
 - Vespel®
- **BACK-UP RINGS:** PTFE &/or PCTFE
- **O-RING MATERIAL OPTIONS:**
 - BUNA-N
 - Viton-A®
 - EPDM
- **OTHER WETTED PARTS:**
 - 316 Stainless Steel

PORTING

- **INLET & OUTLET OPTIONS:**
 - 3/8" FNPT, SAE J1926, SAE AS5202, BSPP
 - 1/2" FNPT, SAE J1926, SAE AS5202, BSPP
 - 3/4" FNPT, SAE J1926, SAE AS5202, BSPP
- **GAUGE PORTS:** 1/4" FNPT

OPTIONS

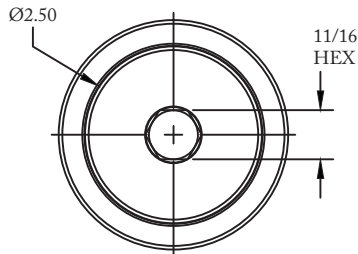
- Private label
- Surface mount

SAE AS5202 supersedes MS33649

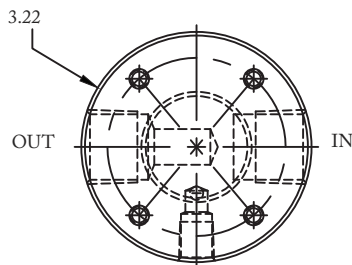
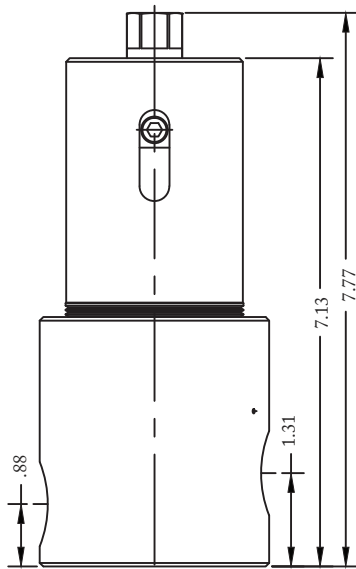
Viton-A®, Vespel®, and Kalrez® are registered trademarks of E.I. du Pont de Nemours & Company.

Contact factory for material certifications. Fees may apply.

PART NUMBER: H30-10222G



PORT TYPE	ØA	FLATS
NPT	Ø3.23	—
1/2" SAE	Ø3.48	3.32
3/4" SAE	Ø3.98	3.72

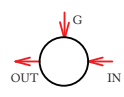



*Optional Surface
mounting holes:
1/4-20 UNC X .5 DP
bolt circle subject to body size*

H2 3116 SERIES

Hydrogen, High Pressure, High Flow
Back Pressure Regulators

PART #:	-	1	2	3	4	5	-	6 7	-	8	-	MODS
H30-10222G	-						-		-		-	

1	CONTROL PRESSURE
1	5-500 PSIG (0.34-34.5 bar)
2	5-800 PSIG (0.34-55.16 bar)
3	10-1500 PSIG (0.7-103.4 bar)
4	15-2500 PSIG (1.0-172.4 bar)
5	25-4000 PSIG (1.7-275.8 Bar)
6	50-6000 PSIG (3.5-413.7 Bar)
2	C _v (FLOW)
1	C _v 1.0
2	C _v 2.0
3	PORT CONFIGURATIONS (FROM TOP)
H	
S	 (STANDARD)

4	PORT SIZE (INLET/OUTLET)
6	3/8"
8	1/2"
T	3/4"
GAUGE PORTS: 1/4" FNPT	
5	PORT TYPE (INLET/OUTLET)
1	FNPT
2	SAE J1926
3	SAE AS5202*
P	BSPP
<i>*SAE AS5202 supersedes MS33649</i>	
67	O-RING MATERIAL
00	BUNA-N
02	VITON®
05	EPDM

8	SEAT MATERIAL
0	VESPEL®
1	PCTFE
MODIFICATIONS	
Blank	NONE
SM	SURFACE MOUNT

6000 PSIG MAX INLET (316 stainless steel body)

The end user is responsible to ensure adequate fittings are used to connect regulator to plumbing

VespeL® and Viton® are registered trademarks of E.I. duPont de Nemours and Company.

Contact Premier for material certifications. Fees may apply