

3016DL SERIES

Dome Loaded, High Pressure, High Flow
Pressure Reducing Regulators



Premier 3016DL Series regulators are dome loaded, high pressure, high flow, piston sensed, pressure reducing regulators rated for inlet pressures up to 10000 PSIG (*dependent on materials of construction*), and Cv 1.0 or 2.0. The dome must be charged (externally) from a gas pressure source (10000 PSIG MAX).

FEATURES

- High flow, Cv 1.0 or 2.0
- Piston sensed
- 1:1 dome load
- Compatible with electro-pneumatic controllers
- Machined bar stock body eliminates porosity found in castings

SOME APPLICATIONS WILL REQUIRE A CUSTOM SOLUTION.
CONTACT PREMIER INDUSTRIES TO REQUEST A MODIFICATION
OR A CUSTOM DESIGN.

SPECIFICATIONS

- **MAXIMUM INLET PRESSURE (REGULATOR AND DOME):**
 - 6000 psig / 413.7 bar, 316 Stainless Steel body
 - 10000 psig / 689.5 bar, 17-4 Stainless Steel body
- **FLOW (Cv):** 1.0 or 2.0

MATERIALS OF CONSTRUCTION

- **BODY OPTIONS:**
 - 316 Stainless Steel
 - 17-4 Stainless Steel
- **WETTED, OTHER:**
 - 316 Stainless Steel, and 17-4 Stainless Steel
- **MAIN VALVE SEAT OPTIONS:**
 - P/N: 30-10227DL:
 - Vespel® SP-1
 - P/N: 30-10225DL:
 - PCTFE (6000 PSIG)
 - Vespel® (10000 PSIG) (standard)
- **VENT VALVE SEAT:**
 - Vespel® SP-1
- **BACK-UP RINGS:**
 - PTFE or PCTFE
- **O-RING MATERIAL OPTIONS:**
 - BUNA-N
 - AFLAS®
 - Viton-A®
 - EPDM
 - FFKM *Contact Premier for pricing*
- **STANDARD LUBRICATION:**
 - Krytox® GPL 206

PORTING

- **INLET/OUTLET:**
 - See part number selection tables on pages 5 and 6
- **GAUGE PORTS:**
 - 1/4" FNPT (standard)
- **DOME INLET:**
 - 1/4" (inlet/outlet port type)
- **VENT PORT:**
 - 1/4" (inlet/outlet port type)

OPTIONS

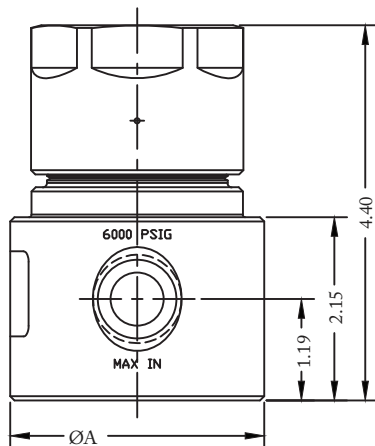
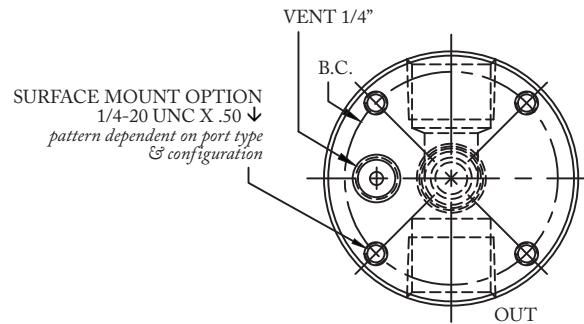
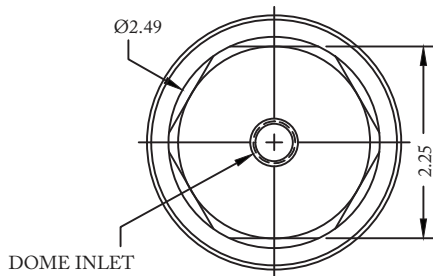
- Private Label
- Surface mount
- Port type uniform
- Non-venting option (30-10227DL)

Viton®, Vespel® and Kalrez® are registered trademarks of E.I.duPont de Nemours and Company
Krytox® is a registered trademark of e Chemours Company FC, LLC.
AFLAS® is a registered trademark of the Asahi Glass Co., Ltd

3016DL SERIES

Dome Loaded, High Pressure, High Flow
Pressure Reducing Regulators

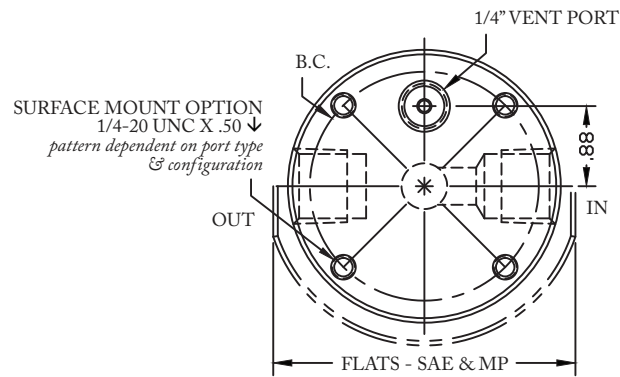
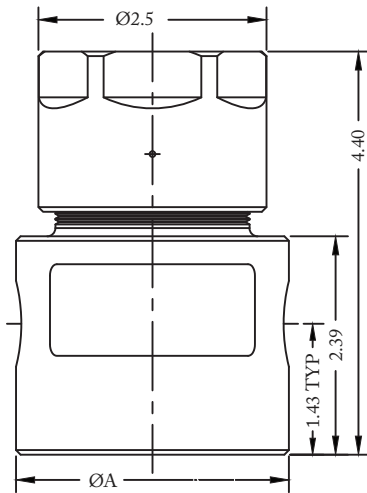
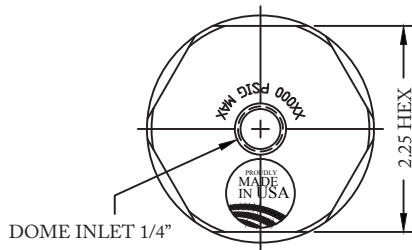
PART NUMBER: 30-10227DL, Cv 2.0
SHOWN BELOW WITH 3/4" NPT PORTS



PORT TYPE	ØA	FLATS	B.C.
1/2" & 3/4"NPT	Ø2.98	—	Ø2.50
1/2" SAE	Ø3.23	3.05	Ø2.63
1" NPT	Ø3.48	—	Ø2.75
9.16" medium pressure	Ø3.48	3.30	Ø2.75
3/4" SAE J1926	Ø3.73	3.36	Ø3.00
3/4" SAE AS5202	Ø3.98	3.60	Ø3.25
3/4" medium pressure	Ø3.98	3.60	Ø3.25
1" SAE	Ø3.98	3.60	Ø3.25

'L' CONFIGURATION BODIES TYPICALLY
REQUIRE A LARGER ØA

PART NUMBER: 30-10225DL, Cv 1.0



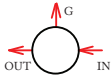
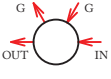
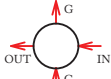

PORT TYPE	ØA	FLATS	B.C.	
1/2" NPT	Ø2.98	—	Ø2.50	
1/2" SAE	Ø3.23	3.05	Ø2.63	
9.16" medium pressure	Ø3.48	3.30	Ø2.63	10K ONLY

3016DL SERIES

Dome Loaded, High Pressure, High Flow
Pressure Reducing Regulators

PART NUMBER	-	1	2	3	4	-	5 6	-	MODS
30-10227DL	-					-		-	

CAPTURED VENTING, C_v 2.0, VESPEL SP-1 SEAT
316 STAINLESS STEEL: 6000 PSI MAX INLET
17-4 STAINLESS STEEL: 10000 PSI MAX INLET

1	OUTLET PRESSURE BODY MATERIAL
6	50-6000 PSIG / 3.5-413.7 BAR 316 STAINLESS STEEL BODY
7	100-10000 PSIG / 6.89-689.5 BAR 17-4 STAINLESS STEEL BODY
2	PORTING CONFIG.
A	
C	
L	
S	
3	PORT SIZE (INLET/OUTLET)
8	1/2"*
9	9/16"***
T	3/4"
W	1"
<p><i>*1/2" NOT AVAILABLE IN MEDIUM PRESSURE</i> <i>**9/16" ONLY AVAILABLE IN MEDIUM PRESSURE</i> VENT PORT: 1/4" INLET/OUTLET/PORT TYPE GAUGE PORTS: 1/4" FNPT</p>	

4	PORT TYPE (INLET/OUTLET/VENT)
N	NPT
J	SAE J1926
A	SAE AS5202
M	Medium pressure
<i>SAE J1926 & AS5202 are not recommended for 10000 psig.</i>	
5 6	O-RINGS
00	BUNA-N
01	AFLAS®
02	VITON-A®
05	EPDM
11	FFKM <i>(contact Premier for pricing)</i>

MODIFICATIONS	
<i>Separate multiple mods with a dash</i>	
Blank	None
AC	Krytox 240AC
K	PCTFE main valve seat <i>(6000 PSIG only)</i>
NV	Non-venting
PTU	Port type uniform
SM	Surface mount

6000 PSIG MAX INLET (316 SS)
10000 PSIG MAX INLET (17-4 SS)
The end user is responsible to ensure adequate fittings are used to connect regulator to plumbing.

Viton® is a registered trademark of E.I. duPont de Nemours and Company. AFLAS® is a registered trademark of the Asahi Glass Co., Ltd. Monel is a registered trademark of Specialty Metals Corporation.

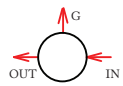
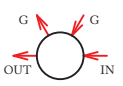

Contact factory for material certifications. Fees may apply.

3016DL SERIES

Dome Loaded, High Pressure, High Flow
Pressure Reducing Regulators

PART NUMBER	-	1	2	3	4	-	5 6	-	MODS
30-10225DL	-					-		-	

CAPTURED VENTING, Cv 1.0
 316 STAINLESS STEEL: 6000 PSI MAX INLET
 17-4 STAINLESS STEEL: 10000 PSI MAX INLET

1	OUTLET PRESSURE <i>BODY MATERIAL</i>
6	50-6000 PSIG / 3.5-413.7 BAR 316 STAINLESS STEEL BODY PCTFE VALVE SEAT
7	100-10000 PSIG / 6.89-689.5 BAR 17-4 STAINLESS STEEL BODY VESPEL VALVE SEAT
2	PORTING CONFIG.
A	
C	
S	
3	PORT SIZE <i>(INLET/OUTLET)</i>
6	3/8"
8	1/2"*
9	9/16"***
<p><i>*1/2" NOT AVAILABLE IN MEDIUM PRESSURE</i> <i>** 9/16" ONLY AVAILABLE IN MEDIUM PRESSURE</i> <i>VENT PORT: 1/4" INLET/OUTLET/PORT TYPE</i> <i>GAUGE PORTS: 1/4" FNPT</i></p>	

4	PORT TYPE <i>(INLET/OUTLET/VENT)</i>
N	NPT
J	SAE J1926
A	SAE AS5202
M	Medium pressure
5 6	O-RINGS
00	BUNA-N
01	AFLAS®
02	VITON-A®
05	EPDM
11	FFKM <i>(contact Premier for pricing)</i>

MODIFICATIONS <i>Separate multiple mods with a dash</i>	
BLANK	None
AC	Krytox 240AC
SM	Surface mount
PTU	Port type uniform

6000 PSIG MAX INLET (316 SS)
10000 PSIG MAX INLET (17-4 SS)
The end user is responsible to ensure adequate fittings are used to connect regulator to plumbing. SAE J1926 & AS5202 are not recommended for 10000 psig.

Viton® is a registered trademark of E.I. du Pont de Nemours and Company. AFLAS® is a registered trademark of the Asahi Glass Co., Ltd.

Contact factory for material certifications. Fees may apply.