

6116 SERIES

Hydraulic, High Pressure, High Flow
Back Pressure Regulators



Premier 6116 Series regulators are hydraulic, high pressure, high flow, piston sensed, back pressure regulators rated for inlet pressures up to 10000 psig / 689.5 bar and (Cv) 1.0 or 2.0.

FEATURES

- High flow capacity (Cv): 1.0 or 2.0
- 10000 psig max inlet pressure
- Optional gauge port
- Machined bar stock body eliminates porosity found in castings

SOME APPLICATIONS WILL REQUIRE A CUSTOM SOLUTION.
CONTACT PREMIER INDUSTRIES TO REQUEST A MODIFICATION
OR A CUSTOM DESIGN.

6116 SERIES

High Pressure, Hydraulic, High Flow
Back Pressure Regulators

SPECIFICATIONS

- **MAXIMUM INLET PRESSURE:**
 - 6000 PSIG / 413.7 bar
316 stainless steel body, standard
 - 10000 PSIG / 689.48 bar
17-4 stainless steel body
- **CONTROL PRESSURE RANGES:**
 - 5-500 PSIG (*0.34-34.5 bar*)
 - 5-800 PSIG (*0.34-55.16 bar*)
 - 10-1500 PSIG (*0.7-103.4 bar*)
 - 15-2500 PSIG (*1.0-172.4 bar*)
 - 25-4000 PSIG (*1.7-275.8 bar*)
 - 50-6000 PSIG (*3.5-413.7 bar*)
- **FLOW (Cv):** 1.0 or 2.0
- **OPERATING TEMPERATURE:****
 - -15°F/-26°C to 212°F/100°C (BUNA-N)
 - -4°F/-20°C to 400°F/204°C (Viton®)
 - -65°F/-54°C to 302°F/150°C (EPDM)

*** Other temperature compounds available*

MATERIALS OF CONSTRUCTION

- **BODY OPTIONS:**
 - 316 Stainless Steel (*standard*)
 - 17-4 Stainless Steel
- **MAIN VALVE STEM:** 17-4 Stainless Steel
- **MAIN VALVE SEAT:** 316 Stainless Steel
- **BACK-UP RINGS:** PTFE and/or PCTFE
- **O-RING MATERIAL OPTIONS:**
 - BUNA-N
 - Viton-A®
 - EPDM
 - FFKM (*contact Premier for pricing*)
- **OTHER WETTED PARTS:**
 - 316 Stainless Steel
 - 17-4 Stainless Steel
- **STANDARD LUBRICANT:**
 - Krytox GPL 206

PORTING

- **INLET & OUTLET OPTIONS:**
 - 1/2" FNPT, SAE J1926, SAE AS5202*
 - 3/4" FNPT, SAE J1926, SAE AS5202*
- **GAUGE PORTS:** 1/4" FNPT

**SAE AS5202 SUPERSEDES MS33649*

OPTIONS

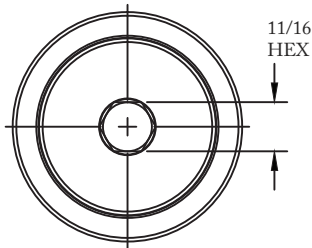
- Private label

Viton® is a registered trademark of E.I. duPont de Nemours and Company

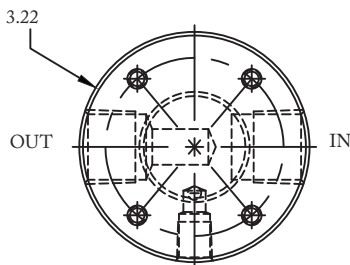
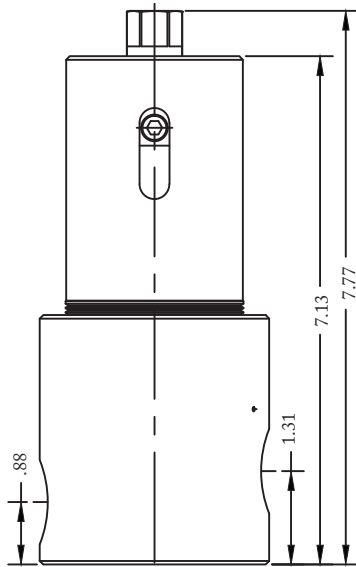
Krytox® is a registered trademark of The Chemours Company FC, LLC.

Contact factory for material certifications. Fees may apply.

PART NUMBER: 30-10222



PORT TYPE	ØA	FLATS
NPT	Ø3.23	—
1/2" SAE	Ø3.48	3.32
3/4" SAE	Ø3.98	3.72



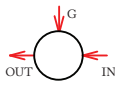

*Optional Surface
mounting holes:
1/4-20 UNC X .5 DP
bolt circle subject to body size*

6116 SERIES

High Pressure, Hydraulic, High Flow
Back Pressure Regulators

PART #	-	1	2	3	4	5	-	6	7	-	MODS
30-10222	-						-			-	

316 STAINLESS STEEL BODY, 17-4 STAINLESS STEEL
BONNET, 6000 PSIG MAX INLET (STANDARD)
10000 PSIG MAX INLET MODIFICATION AVAILABLE

1	CONTROL PRESSURE
1	5-500 PSIG (0.34-34.5 BAR)
2	5-800 PSIG (0.34-55.16 BAR)
3	10-1500 PSIG (0.7-103.4 BAR)
4	15-2500 PSIG (1.0-172.4 BAR)
5	25-4000 PSIG (1.7-275.8 BAR)
6	50-6000 PSIG (3.5-413.7 BAR)
2	Cv (FLOW)
1	Cv 1.0
2	Cv 2.0
3	PORT CONFIGURATIONS (from top)
H	
S	 (STANDARD)

4	PORT SIZE INLET/OUTLET
8	1/2"
T	3/4"
GAUGE PORT: 1/4" FNPT	
5	PORT TYPE INLET/OUTLET
1	FNPT
2	SAE J1926
3	SAE AS5202*
<i>*SAE AS5202 SUPERSEDES MS33649</i>	
67	O-RING MATERIAL
00	BUNA-N
02	VITON®
05	EPDM
11	FFKM

MODIFICATIONS	
BLANK	NONE
AC	KRYTOX 240AC
SM	SURFACE MOUNT
T	10000 PSIG MAX 17-4 STAINLESS STEEL CONSTRUCTION

6000 PSIG MAX INLET (316 stainless steel body)
10000 PSIG MAX INLET (17-4 stainless steel body)
The end user is responsible to ensure adequate fittings are used to connect regulator to plumbing

Viton® is a registered trademark of E.I. duPont de Nemours and Company

Krytox® is a registered trademark of The Chemours Company FC, LLC.

Contact factory for material certifications.
Fees may apply