

2500DL SERIES

Dome Loaded, Pneumatic, Diaphragm Sensed
Pressure Reducing Regulators



Premier 2500DL Series regulators dome loaded, single stage, diaphragm sensed, pressure reducing regulators are rated for inlet pressure up to 3000 PSIG (206.84 BAR), outlet pressures up to 500 PSIG (34.47 BAR), and Cv 0.08 or 0.20. Models are available for both corrosive and non-corrosive service, fitted with your choice of stainless steel or neoprene diaphragm.

FEATURES

- Compact size
- Optional stainless steel diaphragm minimizes inboard diffusion of air into regulator (model with neoprene diaphragm also available)
- 3000 PSIG (206.84 BAR) max inlet pressure
- Cv 0.08 or 0.20
- Non-venting
- Machined bar stock body, bonnet, and piston eliminates porosity found in castings

SOME APPLICATIONS WILL REQUIRE A CUSTOM SOLUTION.
CONTACT PREMIER INDUSTRIES TO REQUEST A MODIFICATION
OR A CUSTOM DESIGN.

SPECIFICATIONS

- **MAXIMUM INLET PRESSURE:**
 - 3000 PSIG (206.84 BAR)
- **MAXIMUM OUTLET PRESSURE:**
 - **STAINLESS STEEL DIAPHRAGM:**
500 PSIG (34.47 BAR)
 - **NEOPRENE DIAPHRAGM:**
150 PSIG (10.34 BAR)
- **FLOW (Cv):** 0.08, or 0.20
- **LOAD RATIO:**
 - **STAINLESS STEEL DIAPHRAGM:** 1:1
 - **NEOPRENE DIAPHRAGM:** 0.785:1

MATERIALS OF CONSTRUCTION

- **BODY OPTIONS:**
 - 316 Stainless Steel
 - SAE 360 Brass
 - SAE 360 Brass, Nickel Plated
(contact Premier for pricing)
- **BONNET OPTIONS:**
 - 316 Stainless Steel
 - SAE 360 Brass
 - SAE 360 Brass, Nickel Plated
- **DIAPHRAGM OPTIONS:**
 - Neoprene
 - 316 Stainless Steel
- **DIAPHRAGM SEAL:** PTFE
- **VALVE SEAT:** PCTFE

PORTING

- **INLET:**
 - 1/4 FNPT
- **OUTLET:**
 - 1/4-18 NPT
- **DOME PORT:**
 - 1/4-18 NPT

OPTIONS

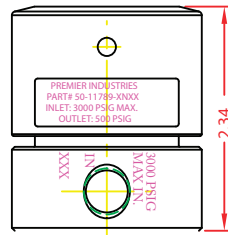
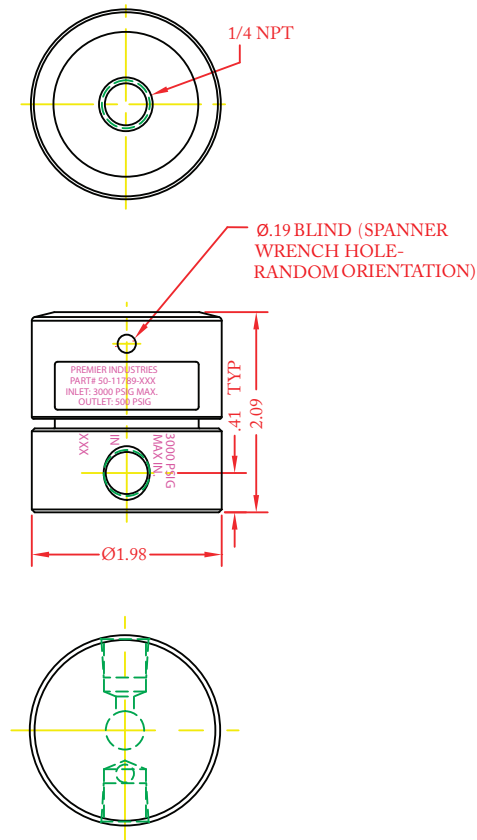
- Private label
- Gauges

2500DL SERIES

Dome Loaded, Pneumatic, Diaphragm Sensed
Pressure Reducing Regulators

PART NUMBER 50-11789
316 STAINLESS STEEL DIAPHRAGM

PART NUMBER 50-11789-XNXX
NEOPRENE DIAPHRAGM

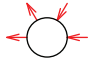
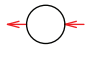

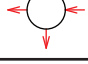
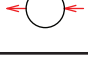



2500DL SERIES

Dome Loaded, Pneumatic, Diaphragm Sensed
Pressure Reducing Regulators

PART #	-	1	2	3	4
50-11789	-				

1	BODY MATERIAL AND FINISH
1	316 STAINLESS STEEL, CLEANED PER SPEC #515
3	SAE 360 BRASS, NICKEL PLATED <i>(CONTACT FACTORY FOR PRICING)</i>
4	SAE 360 BRASS
2	DIAPHRAGM MATERIAL
BLANK	316 STAINLESS STEEL DIAPHRAGM 500 PSIG MAX OUTLET PRESSURE
N	NEOPRENE DIAPHRAGM 150 PSIG MAX OUTLET PRESSURE
3	MAIN VALVE Cv
0	Cv 0.08
2	Cv 0.20

4	PORTING CONFIGURATIONS
1	
2	
3	
4	
5	
6	

Contact factory for material certifications. Fees may apply.