

O2 3000 SERIES

High Pressure, Oxygen
Pressure Reducing Regulators



Oxygen regulators from the Premier O2 3000 Series are piston sensed, pressure reducing regulators rated for inlet and outlet pressures up to 6000 PSIG (*413.69 bar*) and Cv 0.04, 0.06, 0.12, 0.20, or 0.30.

O2 3000 Series regulators are designed for use in Oxygen applications; they are available with a wide range of inlet and outlet configurations. Captured venting is standard.

FEATURES

- Designed for use with Oxygen
- 6000 PSIG (*413.69 bar*)
- Captured venting standard
- Cv 0.04, 0.06, 0.12, 0.20, or 0.30
- 40 micron sintered bronze inlet filter
- Economical pricing
- Machined bar stock body, bonnet and piston eliminates porosity found in castings

SOME APPLICATIONS WILL REQUIRE A CUSTOM SOLUTION.
CONTACT PREMIER INDUSTRIES TO REQUEST A MODIFICATION
OR A CUSTOM DESIGN.

SPECIFICATIONS

- **MAXIMUM INLET PRESSURE:**
 - 6000 PSIG (413.7 bar)
dependent upon configuration
- **CONTROL PRESSURE RANGES:**
 - 0-200 PSIG (0-13.79 Bar)
 - 20-3000 PSIG (1.4-20.7 Bar)
 - 5-500 PSIG (0.35-34.5 Bar)
 - 5-800 PSIG (0.35-55.2 Bar)
 - 10-1500 PSIG (0.69-103.4 Bar)
 - 15-2500 PSIG (1.0-172.4 Bar)
 - 25-4000 PSIG (1.7-275.8 Bar)
 - 50-6000 PSIG (3.4-413.7 Bar)
- **FLOW (Cv):**
 - 0.04 (6000 PSIG MAX, PCTFE SEAT)
 - 0.06 (6000 PSIG MAX, PCTFE SEAT)
 - 0.12 (6000 PSIG MAX, PCTFE SEAT)
 - 0.20 (4000 PSIG MAX, PCTFE SEAT)
 - 0.30 (4000 PSIG MAX, PCTFE SEAT)
 - 0.20 (6000 PSIG MAX, VESPEL SP-21 SEAT)
 - 0.30 (6000 PSIG MAX, VESPEL SP-21 SEAT)
- **VENT VALVE Cv:** 0.06

MATERIALS OF CONSTRUCTION

- **BODY & BONNET:**
 - SAE 360 Brass
- **WETTED, OTHER:**
 - Monel® & SAE 360 Brass
- **SEAL OPTIONS:**
 - Viton-A®
 - FFKM
- **BACK-UP RINGS:**
 - PTFE & PCTFE
- **MAIN VALVE SEAT :**
 - PCTFE or Vespel® SP-21
- **VENT VALVE SEAT :**
 - Vespel® SP-21
- **VALVE:**
 - Monel® 400 & K-500
- **VALVE SPRING:**
 - Monel®
- **INLET FILTER:**
 - Sintered bronze, 40 micron
- **STANDARD LUBRICANT:**
 - Krytox GPL 206

PORTING

- **INLET/OUTLET:**
 - 1/4", 3/8", 1/2" FNPT
 - 1/4", 3/8", 1/2" SAE J1926
 - 1/4", 3/8", 1/2" SAE AS5202*
** SAE AS5202 supersedes MS33649*
- **GAUGE PORTS:**
 - 1/4" FNPT
(Unless port type uniform modifier (PTU) is specified)
- **VENT PORT:**
 - 1/4" inlet/outlet port type

OPTIONS

- Gauges
- Private label
- Panel mounting bracket: P/N: 30-10059 (Ø2.15 panel hole)
- Panel mounting nuts: P/N: 30-10189 (Ø2.28 panel hole)
- Tamper resistant acorn nut

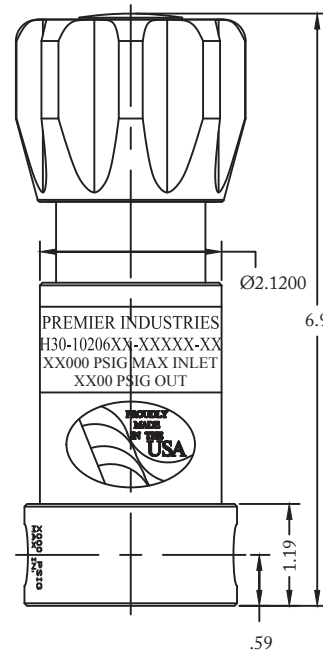
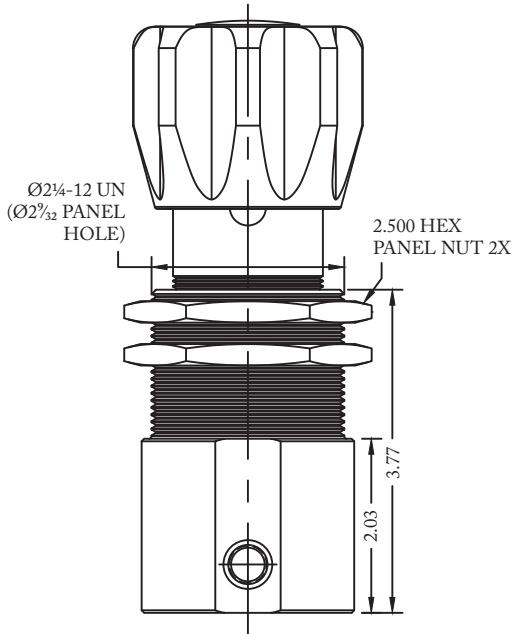
Vespel® is a registered trademark of E.I.duPont de Nemours and Company.

Monel® is a registered trademark of Special Metals Corporation

Krytox® is a registered trademark of The Chemours Company FC, LLC

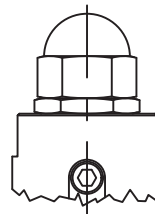
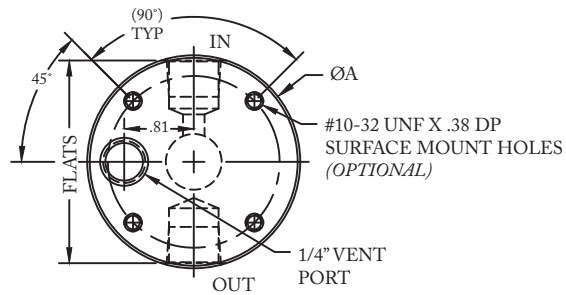
Contact factory for material certifications. Fees may apply.

PART NUMBER: Oy30-10206



BODY DIMENSIONS		
PORT SIZE & TYPE	ØA	FLATS
NPT	Ø2.98	—
1/4" & 3/8" SAE	Ø2.98	2.81
1/2" SAE	Ø3.23	2.98

3/8" & LARGER 'L' CONFIGURATION BODIES REQUIRE A LARGER ØA

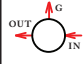
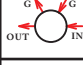
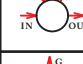
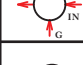



O2 3000 SERIES

High Pressure, Oxygen
Pressure Reducing Regulators

PART #	1	2	-	3	4	5	6	7	-	8	9	-	MODS
Oy30-10206			-						-			-	

1 2	MOUNTING STYLE
MB	MOUNTING BRACKET
PN	PANEL NUT STYLE BODY
3	OUTLET PRESSURE
0	0-200 PSIG (0-13.79 BAR)
1	5-500 PSIG (0.35-34.5 BAR)
2	5-800 PSIG (0.35-55.2 BAR)
3	10-1500 PSIG (0.69-103.4 BAR)
4	15-2500 PSIG (1.0-172.4 BAR)
5	25-4000 PSIG (1.7-275.8 BAR)
6	50-6000 PSIG (3.4-413.7 BAR)
8	20-3000 PSIG (1.4-20.7 BAR)
4	FLOW (Cv)
A	Cv 0.04 (6000 PSIG MAX, PCTFE SEAT)
0	Cv 0.06 (6000 PSIG MAX, PCTFE SEAT)
1	Cv 0.12 (6000 PSIG MAX, PCTFE SEAT)
2	Cv 0.2 (4000 PSIG MAX, PCTFE SEAT)
3	Cv 0.3 (4000 PSIG MAX, PCTFE SEAT)
6	Cv 0.2 (6000 PSIG MAX, VESPEL SP-21 SEAT)
7	Cv 0.3 (6000 PSIG MAX, VESPEL SP-21 SEAT)

5	PORT CONFIG.
A	
C	
D	
L	
S	
6	PORT SIZE
4	1/4"
6	3/8"
8	1/2"
<i>GAUGE PORTS: 1/4" FNPT VENT PORT: 1/4" inlet/outlet port type</i>	
7	PORT TYPE IN/OUT/VENT
1	FNPT
2	SAE J1926
3	SAE AS5202**
<i>**SAE AS5202 supersedes MS33649</i>	

8 9	O-RING MATERIAL
02	VITON-A®
11	FFKM <i>CONTACT PREMIER FOR PRICING</i>
MODIFICATIONS <i>SEPARATE MULTIPLE MODS WITH A DASH</i>	
BLANK	NONE
AC	KRYTOX 240AC
ANT	ACORN NUT
NV	NON-VENTING
PTU	PORT TYPE UNIFORM
SM	SURFACE MOUNT

*6000 PSIG MAX INLET (Brass)
The end user is responsible to ensure adequate fittings are used to connect regulator to plumbing.*

Viton-A® is a registered trademark of E.I. duPont de Nemours and Company

Contact factory for material certifications. Fees may apply.

Krytox® is a registered trademark of The Chemours Company FC, LLC

Surface mount: pattern dependent on port type, size & configuration. -not available on panel mount style bodies.