

AO32 2.0 SERIES

Pneumatically Operated, 3 Way 2 Position
High Pressure Valves



Premier AO32 2.0 Series 3-way 2-position valves control the flow of media by connecting two of the three process ports.

Three functions in one valve:

- Normally Closed (NC):

The valve blocks flow and vents downstream media in its default position. It allows flow when actuated.

- Normally Open (NO):

The valve allows flow in its default position. It blocks flow and vents downstream media when actuated.

- Switching Operation:

The valve flows through one or two outlets in its default position and switches to the other when actuated.

Premier AO32 2.0 valves are rated for pressures up to 10000 psig (689.5 bar) and Cv 2.0.

FEATURES

- 3-way 2-position
- Cv 2.0
- 10000 PSIG (689.5 BAR) max operating pressure
- Robust design for long cycle life
- Customize and optimize to meet your unique requirement (*contact Premier*)

SOME APPLICATIONS WILL REQUIRE A CUSTOM SOLUTION.
CONTACT PREMIER INDUSTRIES TO REQUEST A MODIFICATION
OR A CUSTOM DESIGN.

SPECIFICATIONS

- **MAXIMUM OPERATING PRESSURE :**
 - 10000 psig / 689.5 bar
- **ACTUATION PRESSURE RANGE:**
 - 90-110 psig / 6.2-7.6 bar
- **FLOW (Cv):** 2.0

MATERIALS OF CONSTRUCTION

PROCESS SIDE WETTED:

- **BODY/INSERT/STEM MATERIAL OPTIONS:**
 - 316 Stainless Steel
- **VALVE SEAT OPTIONS:**
 - Vespel-SP-1
- **O-RING SEAL OPTIONS:**
 - Buna-N
 - Viton-A
 - EPDM
 - FFKM (*contact Premier for pricing*)
 - Polyurethane
- **LUBRICANT:**
 - Krytox 240AC (*standard*)
 - Molykote 44 medium lubricant (*mod, recommended for water service*)

ACTUATOR SIDE WETTED:

- **PISTON:**
 - 303 Stainless Steel
- **BONNET:**
 - 6061-T6 Aluminum, Clear Anodize

NON-WETTED:

- **SPRING:** Music Wire
- **BACKUP RINGS:** PTFE
- **OTHER:** 316 Stainless Steel

PORTING

- **INLET & OUTLET OPTIONS:**
 - See selection chart
- **ACTUATION PORT:**
 - 1/8" FNPT
 - AS5202-08

OPTIONS

- Private label
- Solenoid valve (*1/8" FNPT actuation port only*)
- Switch ports
- Indicator switch sold separately (P/N: 70-00434)

Viton-A® and Vespel are registered trademarks of E.I. duPont de Nemours and Company.

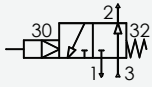
Krytox® is a registered trademark of The Chemours Company FC, LLC.

AO32 2.0 SERIES

Pneumatically Operated, 3 Way 2 Position
High Pressure Valves

PART NUMBER: 70-00573

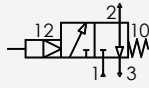
NORMALLY OPEN OPERATION



SUPPLY PORT 3

DOWNSTREAM PROCESS, PORT 2
EXHAUST, PORT 1

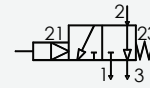
NORMALLY CLOSED OPERATION



SUPPLY PORT 1

DOWNSTREAM PROCESS PORT 2
EXHAUST PORT 3

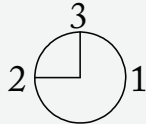
SWITCHING OPERATION



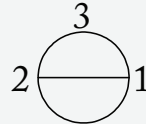
SUPPLY PORT 2

NOT ACTUATED OUTLET PORT 3
ACTUATED OUTLET PORT 1

**NOT
ACTUATED**



PORTING CONNECTIONS
REFERENCE



ACTUATED

AO32 2.0 SERIES

Pneumatically Operated, 3 Way 2 Position
High Pressure Valves

PART #	-	1	-	2	3	-	4	5	-	MODS
70-00573	-		-			-			-	

1	SEAT MATERIAL
1	VESPEL SP-1
2	BODY/INSERT/STEM MATERIAL
1	316 STAINLESS STEEL
3	O-RING MATERIAL
1	BUNA-N
2	VITON-A®
3	EPDM
4	FFKM <i>(CONTACT PREMIER FOR PRICING)</i>
5	POLYURETHANE

4	PROCESS PORTS
1	SAE AS5202-08 (ALL PORTS) ('P' = 3.25")
2	1/2" (F)NPT (ALL PORTS) ('P' = 3.48")
3	1/4" MED. PRESSURE (ALL PORTS) ('P' = 3.25")
4	1/4" HIGH PRESSURE (ALL PORTS) ('P' = 3.25") Cv 1.12
5	ACTUATION PORT
1	1/8 (F)NPT
2	AS5202-08

SPECIAL MODS**	
BLANK	NONE
1	1X INDICATOR SWITCH PORT
2	2X INDICATOR SWITCH PORTS
3	4X INDICATOR SWITCH PORTS
4	SOLENOID VALVE ACTUATOR <i>(1/8" ACTUATION PORT ONLY)</i>
5	MOLYKOTE 44 MEDIUM LUBRICANT

CONSULT PREMIER INDUSTRIES IF ORDERING SPECIAL MODS, OR IF UNLISTED CONFIGURATIONS ARE REQUIRED.

ADD ALL MODS TO END OF PART#
(EX. 70-00573-1-12-12-1)

Viton® is a registered trademark of E.I. duPont de Nemours and Company.