

70 0.42A SERIES

High Pressure
Shut Off Valves



Premier 70 0.42A Series shut off valves are stainless steel, high pressure valves rated for pressures up to 10000 PSIG, and Cv 0.42.

70 0.42A Series valves support the flow of a liquid or gas in an angle configuration and feature a metal stop that prevents stem over-travel. The metal stop also functions as a secondary metal-to-metal seat should the soft seat fail.

Premier 70 0.42A valves may be used in a wide variety of applications consistent with valve materials compatibility with media. Common applications include gas analysis sampling systems, GSE support pressure panels, research and development labs, manifolds, panels, and instrumentation among others.

FEATURES

- Rated up to 10000 PSIG
- Cv 0.42
- Angle configuration
- A variety of port sizes and types
- Low torque at high pressures
- Bubble-tight shutoff

SOME APPLICATIONS WILL REQUIRE A CUSTOM SOLUTION.
CONTACT PREMIER INDUSTRIES TO REQUEST A MODIFICATION
OR A CUSTOM DESIGN.

PART NUMBER: 70-1100A

SPECIFICATIONS

- **MAXIMUM OPERATING PRESSURE :**
 - PTFE seat, SAE 360 Brass body:
 - 3500 PSIG / 241 BAR
 - PTFE seat, 316 Stainless Steel body:
 - 3500 PSIG / 241 BAR
 - PCTFE seat, SAE 360 Brass body:
 - 6000 PSIG / 414 BAR
 - PCTFE seat, 316 Stainless Steel body:
 - 6000 PSIG / 414 BAR
 - PEEK® seat, SAE 360 Brass body:
 - 6000 PSIG / 414 BAR
 - PEEK® seat, 316 Stainless Steel body:
 - 10000 PSIG / 690 BAR
 - Vespel SP-1® seat, SAE 360 Brass body:
 - 6000 PSIG / 414 BAR
 - Vespel SP-1® seat, 316 Stainless Steel body:
 - 10000 PSIG / 690 BAR
- **LEAK RATE:** Bubble Tight
- **FLOW CV:** 0.42

MATERIALS OF CONSTRUCTION

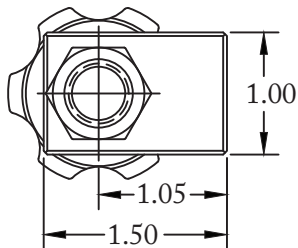
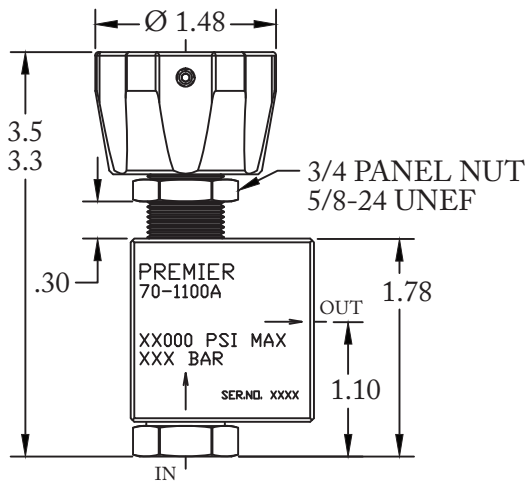
- **BODY:**
 - 316 Stainless Steel
 - SAE 360 Brass
- **VALVE SEAT:**
 - PTFE
 - PCTFE
 - PEEK®
 - Vespel SP-1®
- **VALVE STEM:**
 - 17-4 Stainless Steel (Hardened)
- **O-RING:**
 - BUNA-N
 - AFLAS®
 - Viton-A®
 - EPDM
 - FFKM
 - Nitrile, lo-temp
- **BACK-UP RING:**
 - PTFE
 - PCTFE
- **WETTED PARTS:**
 - 316 Stainless Steel
 - 17-4 Stainless Steel
 - Nitronic® 60 Stainless Steel
 - PEEK®

*Vespel®, and Viton® are registered trademarks of E.I. du Pont de Nemours and Company.
PEEK® is a registered trademark of Victrex PLC
AFLAS® is a registered trademark of the Asahi Glass Co., Ltd.
Nitronic® is a registered trademark of AK Steel*

PORTING

- **INLET/OUTLET PORTING:**
 - 1/4" NPT, SAE J1926, SAE AS5202, Medium Pressure

PART NUMBER: 70-1100A



70 0.42A SERIES

High Pressure
Shut Off Valves

PART #	1	-	2	3	4	5	-	6	7
70-1100		-					-		

1	PATTERN
A	ANGLE PATTERN
2	MATERIALS OF CONSTRUCTION
B	SAE 360 BRASS BODY (6000 PSIG MAX OPERATING PRESSURE)
S	316 STAINLESS STEEL BODY
3	PORT SIZE
4	1/4"
4	PORT TYPE
1	NPT
2	SAE J1926
3	SAE AS5202
4	MEDIUM PRESSURE

5	SEAT MATERIAL
T	PTFE (3500 PSIG MAX OPERATING PRESSURE)
C	PCTFE (6000 PSIG MAX OPERATING PRESSURE)
P	PEEK®
V	VESPEL SP-1®
6 7	O-RING MATERIAL
00	BUNA-N
01	AFLAS®
02	VITON-A®
05	EPDM
11	FFKM CONTACT PREMIER FOR PRICING
12	NITRILE, LO-TEMP

MAXIMUM OPERATING PRESSURE:

PTFE seat, SAE 360 Brass body:
3500 PSIG / 241 BAR
PTFE seat, 316 Stainless Steel body:
3500 PSIG / 241 BAR
PCTFE seat, SAE 360 Brass body:
6000 PSIG / 414 BAR
PCTFE seat, 316 SS body:
6000 PSIG / 414 BAR
PEEK® seat, SAE 360 Brass body:
6000 PSIG / 414 BAR
PEEK® seat, 316 SS body:
10000 PSIG / 690 BAR
Vespel SP-1® seat, SAE 360 Brass body:
6000 PSIG / 414 BAR
Vespel SP-1® seat, 316 SS body:
10000 PSIG / 690 BAR

AFLAS® is a registered trademark of the Asahi Glass Co., Ltd.

PEEK® is a registered trademark of Victrex PLC

Vespel® & Viton® are registered trademarks of E.I. du Pont de Nemours and Company.