

AO 5.0 SERIES

Air Operated, Normally Closed
Valves



The Premier AO 5.0 Series air-operated valves are normally closed, high-pressure valves designed for use with gas or hydraulic media. AO 5.0 Series valves are rated for inlet pressures up to 7500 PSIG (517.1 BAR) and Cv 5.0.

Offered in a wide range of process pressures, porting configurations, and materials, Premier AO valves were designed with the flexibility to integrate seamlessly into your application.

Optional accessories such as solenoid valves, indicator switches, and gauges are available.

FEATURES

- 7500 PSIG / 517.1 BAR max inlet pressure
- Cv 5.0
- Actuation pressure: 80-125 PSIG / 5.5-8.6 BAR
- Optional solenoid valve actuator
- Robust design for long cycle life
- Customize and optimize to meet your unique requirement (*contact Premier*)

SOME APPLICATIONS WILL REQUIRE A CUSTOM SOLUTION.
CONTACT PREMIER INDUSTRIES TO REQUEST A MODIFICATION
OR A CUSTOM DESIGN.

SPECIFICATIONS

- **MAXIMUM INLET PRESSURE :**
 - 7500 PSIG / 517.1 BAR
- **ACTUATION PRESSURE RANGE:**
 - 80-125 PSIG / 5.5-8.6 BAR
- **FLOW (Cv):**
 - 5.0

MATERIALS OF CONSTRUCTION

- **WETTED MATERIAL:**
 - 316 Stainless Steel
 - 17-4 H1150 Stainless Steel
- **BODY (NON-WETTED) OPTIONS:**
 - 316 Stainless Steel
 - 6061-T6 Aluminum, Clear Anodized
- **SEALS/WETTED BACKUP RINGS:**
 - Buna-N/*Buna-N*
 - Viton/*Viton*
 - EPDM/*PTFE*
 - FFKM/*PTFE*
 - Polyurethane/*PTFE*
 - Low Temp Nitrile/*PTFE* (-61 F TR-10)
- **MAIN VALVE SEAT:**
 - Vespel® SP-1
 - PEEK 1000
 - PCTFE*

**(DERATES TO 3000 PSIG/206.8 BAR)*
- **BACKUP RINGS (NON-WETTED):**
 - Buna-N
- **LUBRICANT:**
 - Krytox 240AC (*STANDARD*)

PORTING

- **INLET & OUTLET OPTIONS:**
 - 3/4" FNPT, SAE (AS5202-12)
 - 1" FNPT, SAE (AS5202-16), Medium Pressure
- **ACTUATION PORT:**
 - 1/8" FNPT
 - 1/8" SAE (J1926-2)

OPTIONS

- Private label
- Solenoid valve, P/N: 50-13337
- Indicator switch, P/N: 70-00434
- Gauges

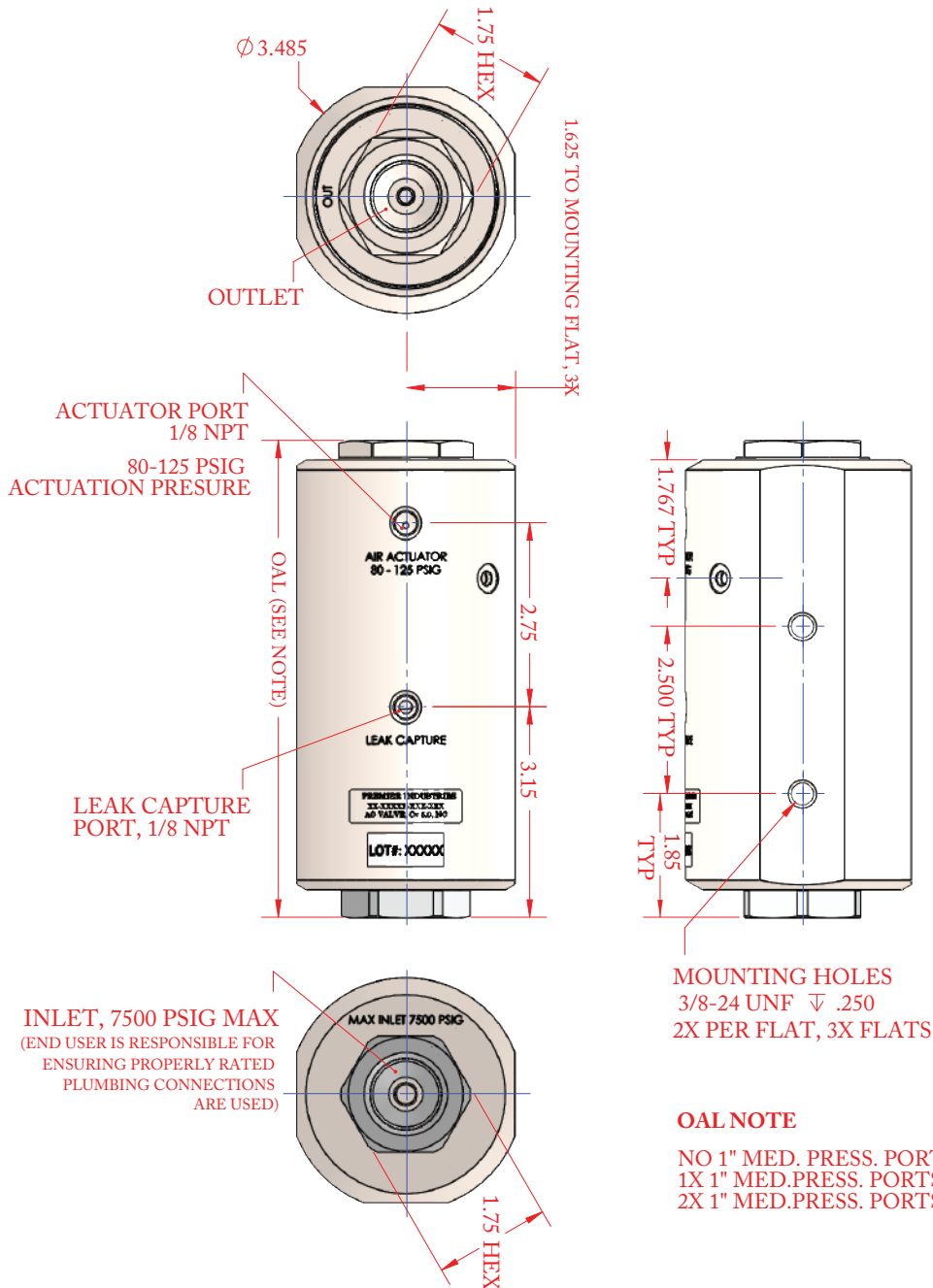
Vespel® is a registered trademark of E.I.duPont de Nemours and Company.

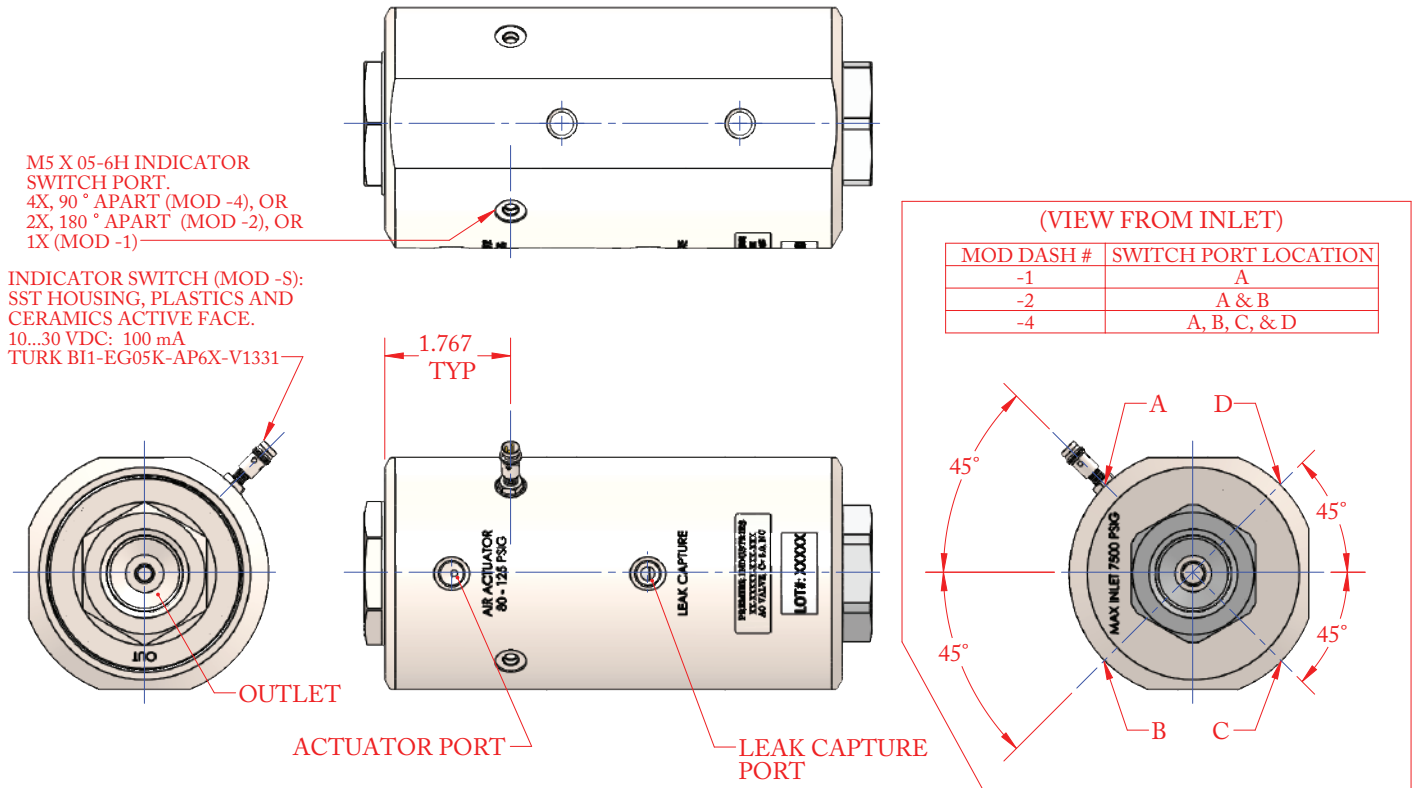
PEEK® is a registered trademark of Victrex PLC

AO 5.0 SERIES

Air Operated, Normally Closed
Valves

PART NUMBER: 70-00463
NORMALLY CLOSED ONLY





INDICATOR SWITCH MOD REFERENCE:

70-00463-XXX-XXX-S

INDICATOR SWITCH PORT

MOD REFERENCE:

70-00463-XXX-XXX-1 (1 SWITCH PORT)
70-00463-XXX-XXX-2 (2X SWITCH PORTS)
70-00463-XXX-XXX-4 (4X SWITCH PORTS)

INDICATOR SWITCH NOTES:

DUE TO SHIPPING DAMAGE CONCERNS, THE INDICATOR SWITCH WILL SHIP WITH THE AO VALVES BUT NOT INSTALLED. CONTACT TURK FOR MORE INFORMATION ON THE SWITCH. TURK SWITCH PART# BI1-EG05K-AP6X-V1331

INSTRUCTION FOR CUSTOMER INSTALLATION:

1. SCREW NUT ONTO SWITCH ALL THE WAY ON, SLIDE ON LOCK WASHER
2. APPLY 80-125 PSIG TO THE AO VALVE LOADER (PROCESS PRESSURE IS NOT REQUIRED.)
3. GENTLY SCREW SWITCH INTO A SWITCH PORT UNTIL CONTACT OCCURS, THEN BACK OFF 1 TO 1.5 FULL TURNS. WRENCH SNUG NUT AGAINST AO VALVE.
4. APPLY POWER TO THE SWITCH. SWITCH LED SHOULD TURN ON.
5. RELIEVE ALL PRESSURE TO THE LOADER, CONFIRM THAT SWITCH LED TURNS OFF.
6. CYCLE THE LOADER ONE MORE TIME TO ENSURE LED TURNS ON/OFF.

AO 5.0 SERIES

Air Operated, Normally Closed
Valves

PART #	-	1	2	3	-	4	5	6	-	MODS
70-00463	-				-				-	

**Cv 5.0, 7500 PSIG MAX INLET
NORMALLY CLOSED ONLY**

1	WETTED MATERIAL / BODY MATERIAL (NON-WETTED)
1	316 STAINLESS STEEL & 17-4PH H1150 SST (WETTED) 316L SST (BODY)
2	316 STAINLESS STEEL & 17-4PH H1150 SST (WETTED) 6061-T6 ALUMINUM, CLEAR ANODIZED (BODY)
2	SEALS / WETTED BACKUP RINGS
1	BUNA-N / BUNA-N
2	VITON® / VITON®
3	EPDM / PTFE
4	FFKM / PTFE <i>CONTACT PREMIER FOR PRICING</i>
5	POLYURETHANE / PTFE
6	LOW TEMP NITRILE / PTFE (-61°F TR-10)
3	SEAT MATERIAL
1	VESPEL® SP-1
2	PEEK 1000®
3	PCTFE <i>(DERATES TO 3000 PSIG)</i>

4	INLET PORT:
1	3/4" SAE (AS5202-12)
2	1" SAE (AS5202-16)
3	3/4" FNPT
4	1" FNPT
5	1" MEDIUM PRESSURE
5	OUTLET PORT:
1	3/4" SAE (AS5202-12)
2	1" SAE (AS5202-16)
3	3/4" FNPT
4	1" FNPT
5	1" MEDIUM PRESSURE

6	AIR AND LEAK PORTS:
1	1/8" FNPT
2	1/8" SAE (J1926-2)
MODIFICATIONS**	
BLANK	NONE
T	ANTI-VIBRATIONAL COLLAR <i>M.P. PORTS ONLY</i>
1	1X SWITCH PORTS
2	2X SWITCH PORTS
4	4X SWITCH PORTS
S	INDICATOR SWITCH

CONSULT PREMIER INDUSTRIES IF
ORDERING SPECIAL MODS, OR IF
UNLISTED CONFIGURATIONS ARE
REQUIRED. ADD ALL MODS TO END
OF PART# (EX. 70-00463-XXX-1)

VESPEL® AND VITON® ARE
REGISTERED TRADEMARKS OF
E.I. DUPONT DE NEMOURS AND
COMPANY.

PEEK® IS A REGISTERED TRADEMARK
OF VICTREX PLC